



Lessons Learnt on Establishing Communities and Engaging Participants in Air Quality Studies

Dr Nat Easton – UKRI SPF Clean Air Programme
Knowledge Exchange Impact Fellow

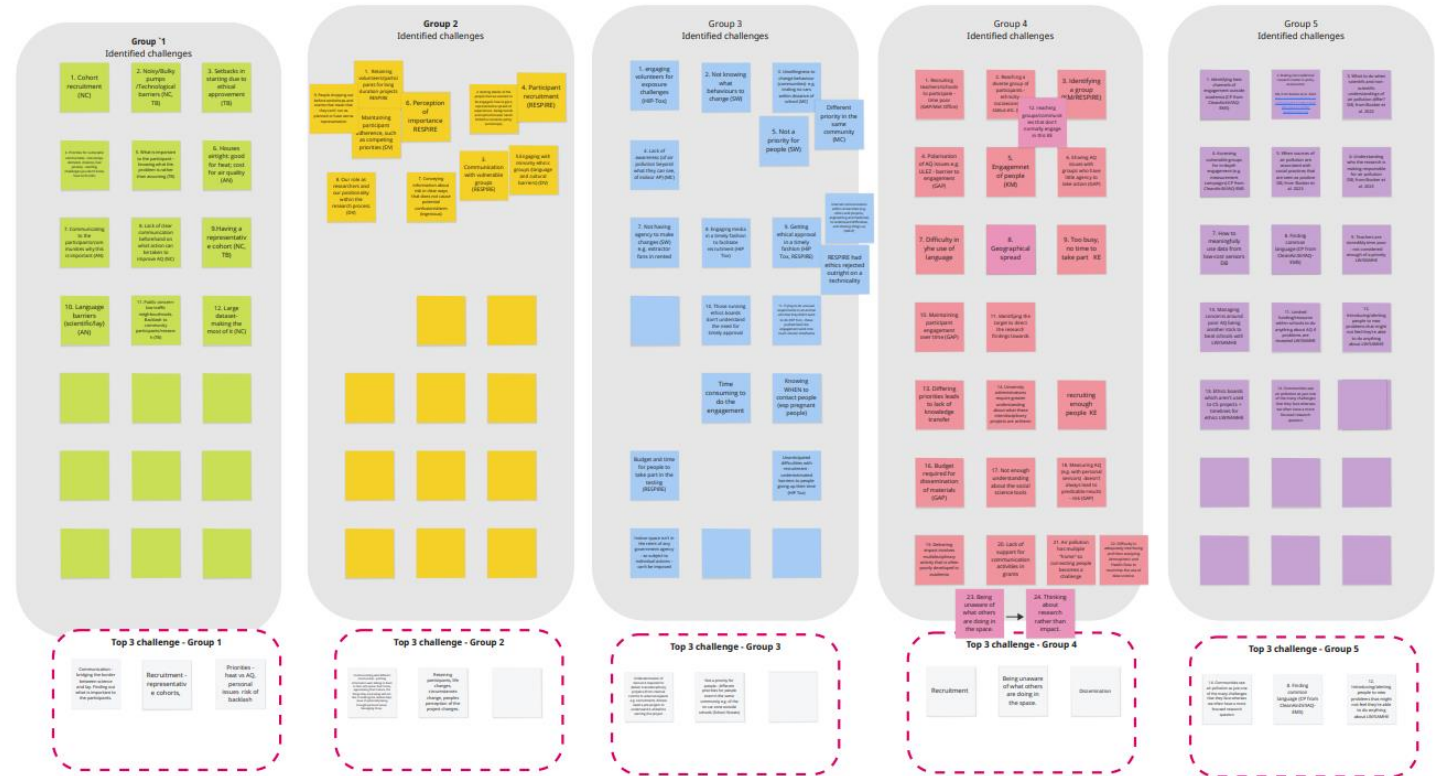
Problem and Opportunities

- Across the SPF projects we noticed many of those who had worked with communities had encountered similar challenges
- These had delayed the collection of the data and taken up time and resources to persevere and develop work-arounds

Through sharing experiences can we prevent future projects encountering the same problems?

Collaborative Workshop

- 1.5 hour workshop held over Zoom with interactive Miro Board with 23 total participants
- Five groups with a facilitator - projects distributed across the groups
- Contributions from WellHome, RESPIRE, INGENIOUS, HIP-Tox, Clean Air4V and experiences from other projects



Collaborative Workshop

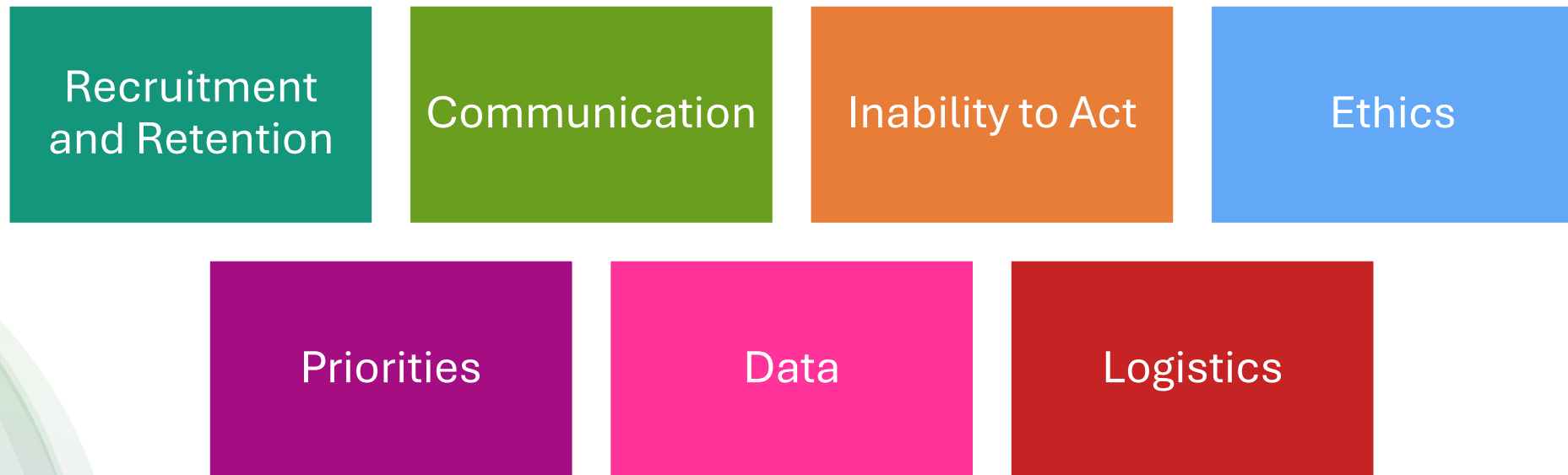
“What challenges have you encountered?”

“For each challenge identified, what actions did you take or what actions could you take to overcome these?”

“What are your top tips and recommendations for engaging in community- and participatory- focussed research in Air Quality?”

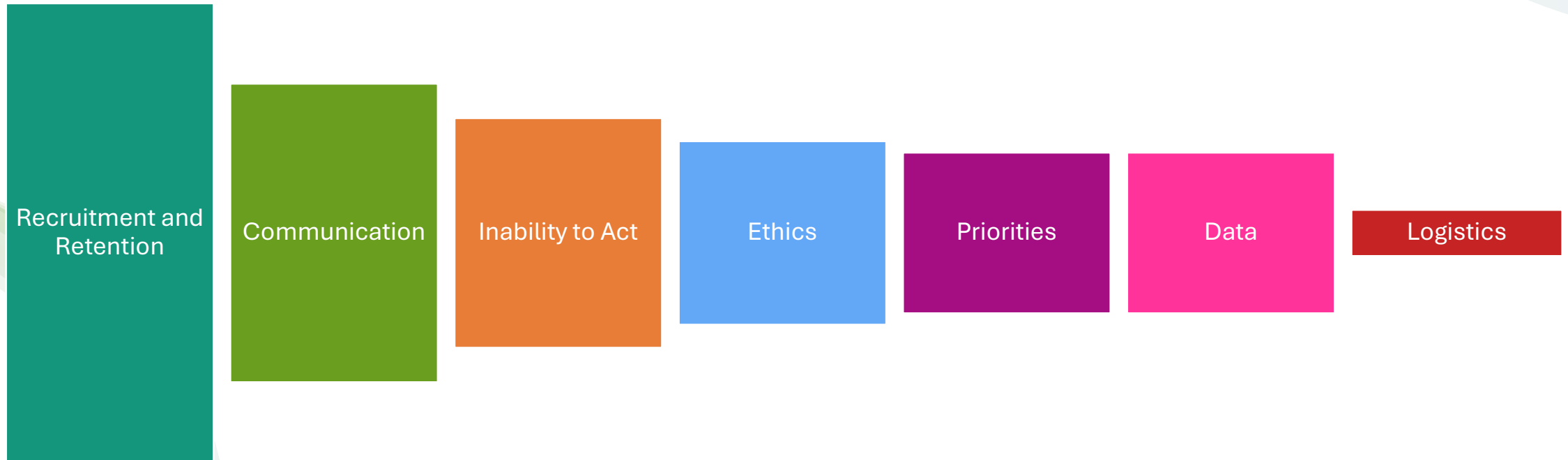
Grouping Challenges

Challenges could be separated into seven top-level groups

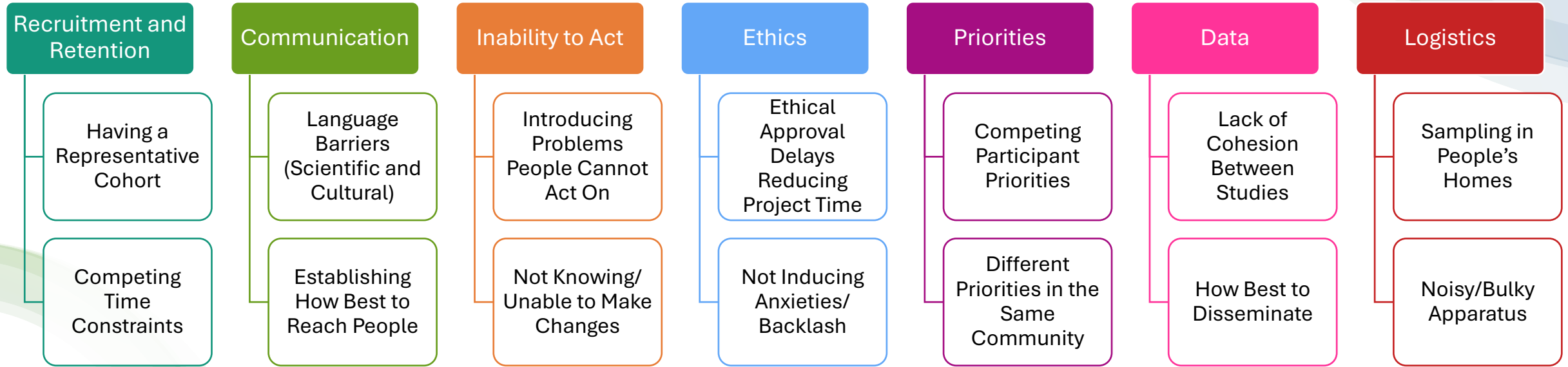


Grouping Challenges

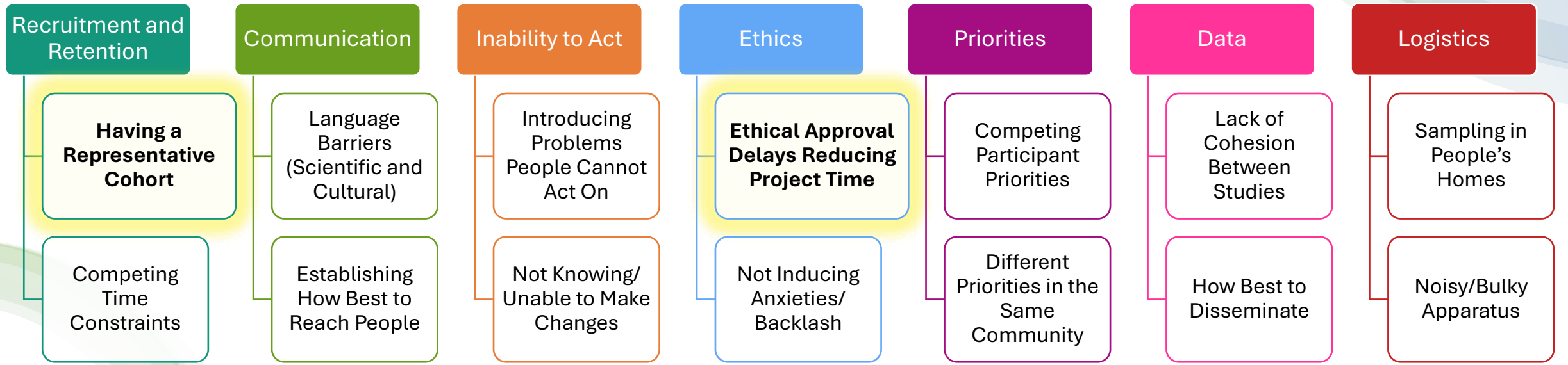
Challenges could be separated into seven top-level groups



Most Incurred Challenges



Most Incurred Challenges



Most cited recommendations

Communication

Involve communities in the design of studies at the start

Allocate time and resources for engagement and involvement

Focus groups/workshops to establish best communications method for your community

Co-produce outputs with the community

Establish/work with community champions to bridge the gap

Recruitment and Retention

Access existing cohorts or work with organisation who can link to potential participants

Inability to Act

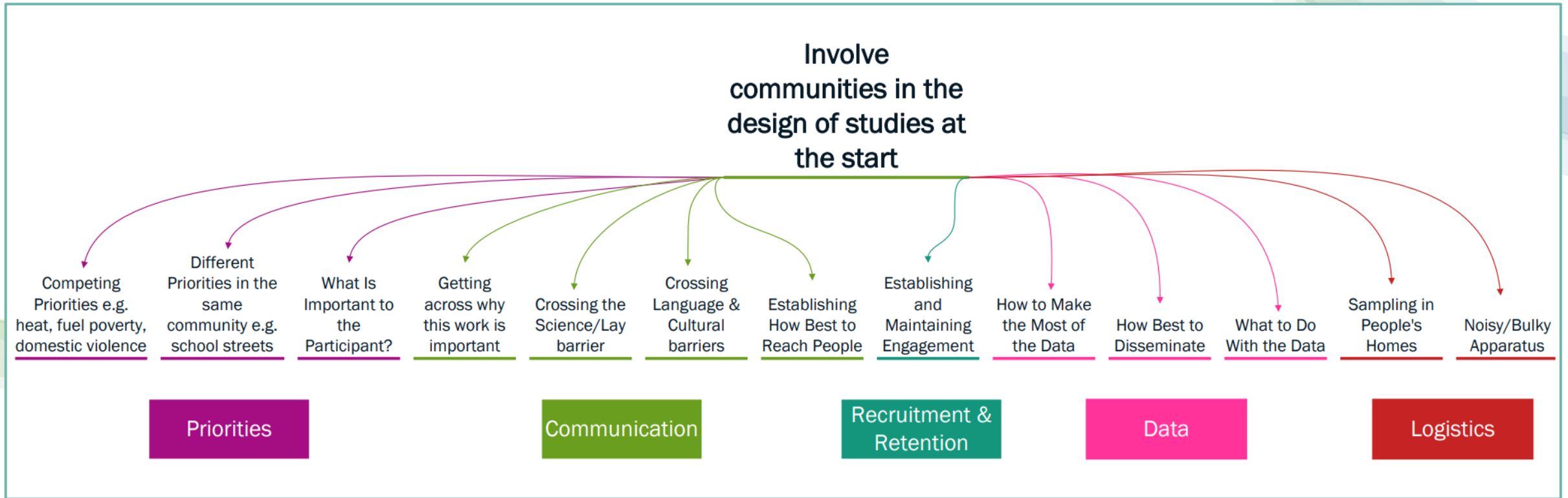
Dynamic listening – what is preventing action? Be prepared to adapt

Overarching Recommendations

Strong evidence base and clear messaging on the importance of air quality

Sharing experiences and best practice

The Power of Communications



Top Tips and Recommendations

1) Ethics and Recruitment
Should Not Be
Underestimated

2) Sharing What Worked AND
What Did Not Work

3) Affected Communities
Know Lots About the Issues
That Affect Them

4) Harmonise Across Projects
Early and Share Resources to
Maximise Impact

Summary

- Similar challenges were experienced across the Clean Air Programme projects
- Establishing Communities is resource intensive! Recruitment and Retention is a major challenge – where possible make use of existing cohorts
- Make sure the skills are present in the team – Include people experienced in communication, ethics and dissemination
- Co-Design of projects can help mitigate many challenges and increase the accessibility of outputs

Acknowledgements

- Thanks to Prof Sarah West & Jennifer Aghaji (SEI / Uni of York), Dr Sarah Moller (Uni of York), Dr Kirsty Meldrum (Uni of Swansea) for their contributions in setting up and running the workshop and helping develop the outputs.
- All Workshop Participants for sharing their experiences (INGENIOUS, HIP-Tox, WellHome, RESPIRE, Clean Air4V, SAMHE, Global Action Plan, Clean Air Champions Team).