

Air quality monitoring using sensor network at University Hospitals Plymouth



Cho Kwong Charlie Lam¹, Elliot West^{1,3}, Joseph Lanario², Cyrus Daneshvar³

¹School of Geography, Earth and Environmental Sciences, University of Plymouth

²Faculty of Health, University of Plymouth

³University Hospitals Plymouth NHS Trust

2024 Clean Air Conference – 3 Oct 2024



UNIVERSITY OF
PLYMOUTH

NHS

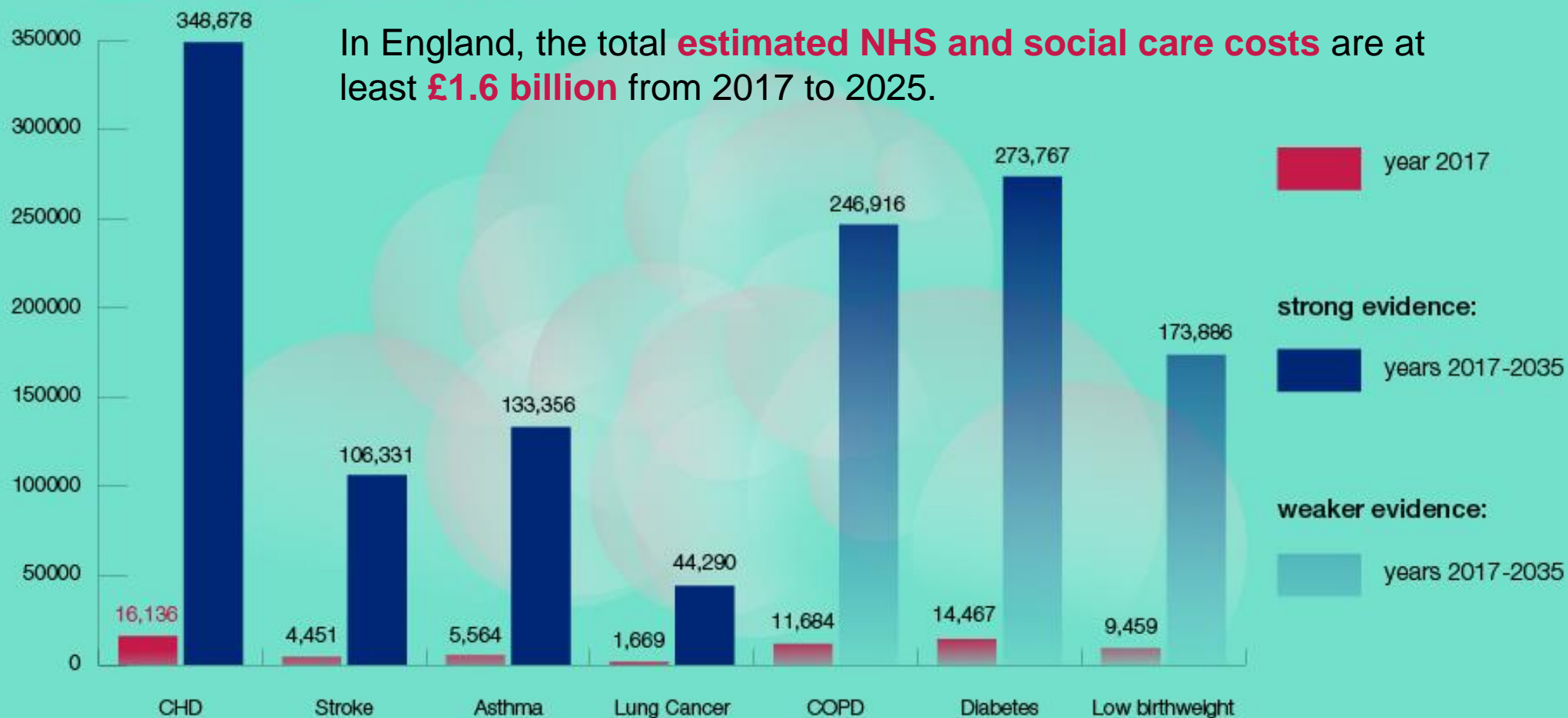
University Hospitals
Plymouth
NHS Trust



Conditions associated with exposure to PM_{2.5}

Cumulative incidence cases attributable to PM_{2.5} in England by disease and total between 2017 and 2035

In England, the total **estimated NHS and social care costs** are at least **£1.6 billion** from 2017 to 2025.



For A Greener Future

2023 – 2028



Clean Air Hospital Framework

Co-designed by Great Ormond Street Hospital and Global Action Plan

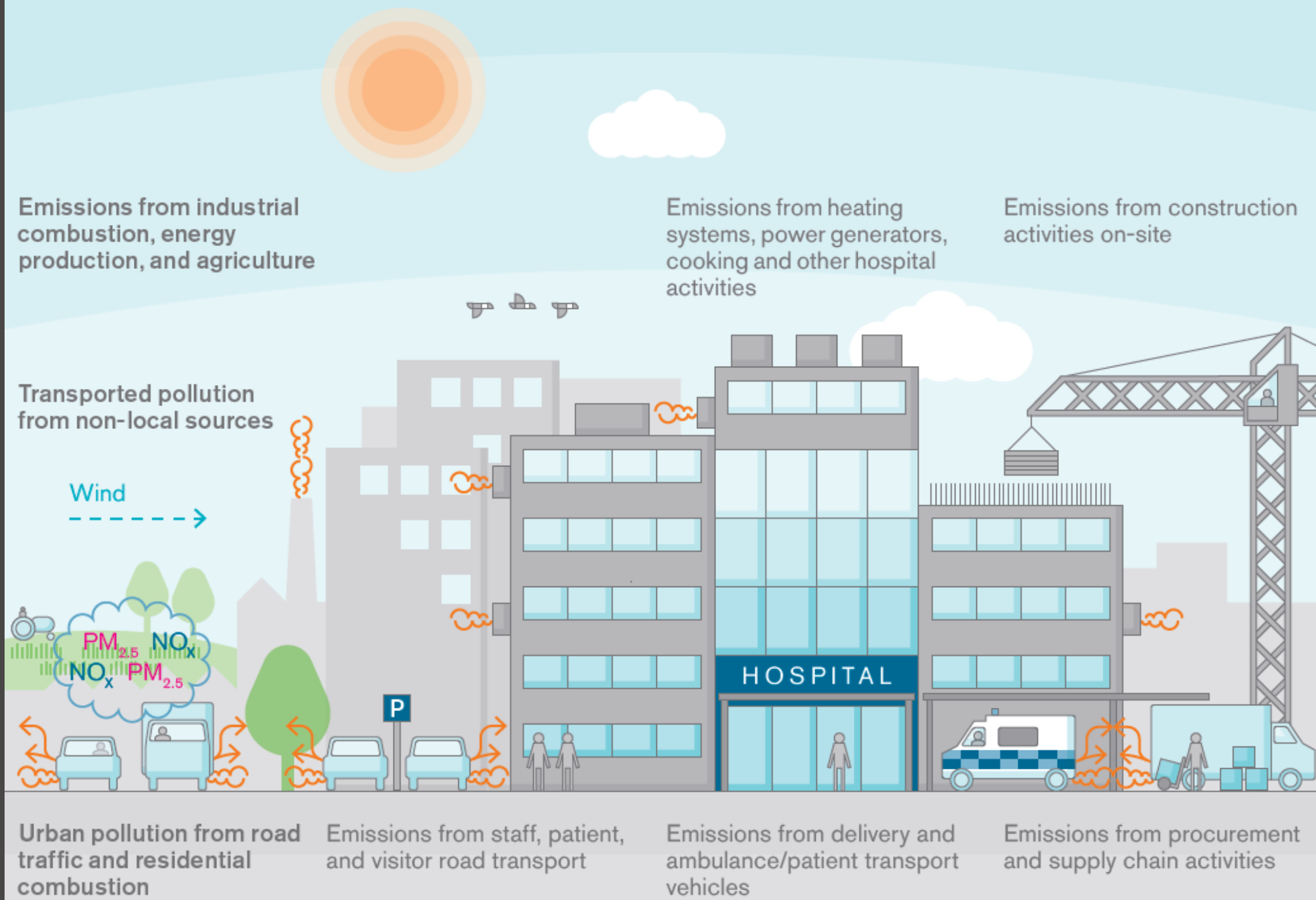


**Great Ormond Street
Hospital for Children**
NHS Foundation Trust



4. Adopt the Clean Air Hospital Framework to achieve an 'Excellent' score of 70% by 2028

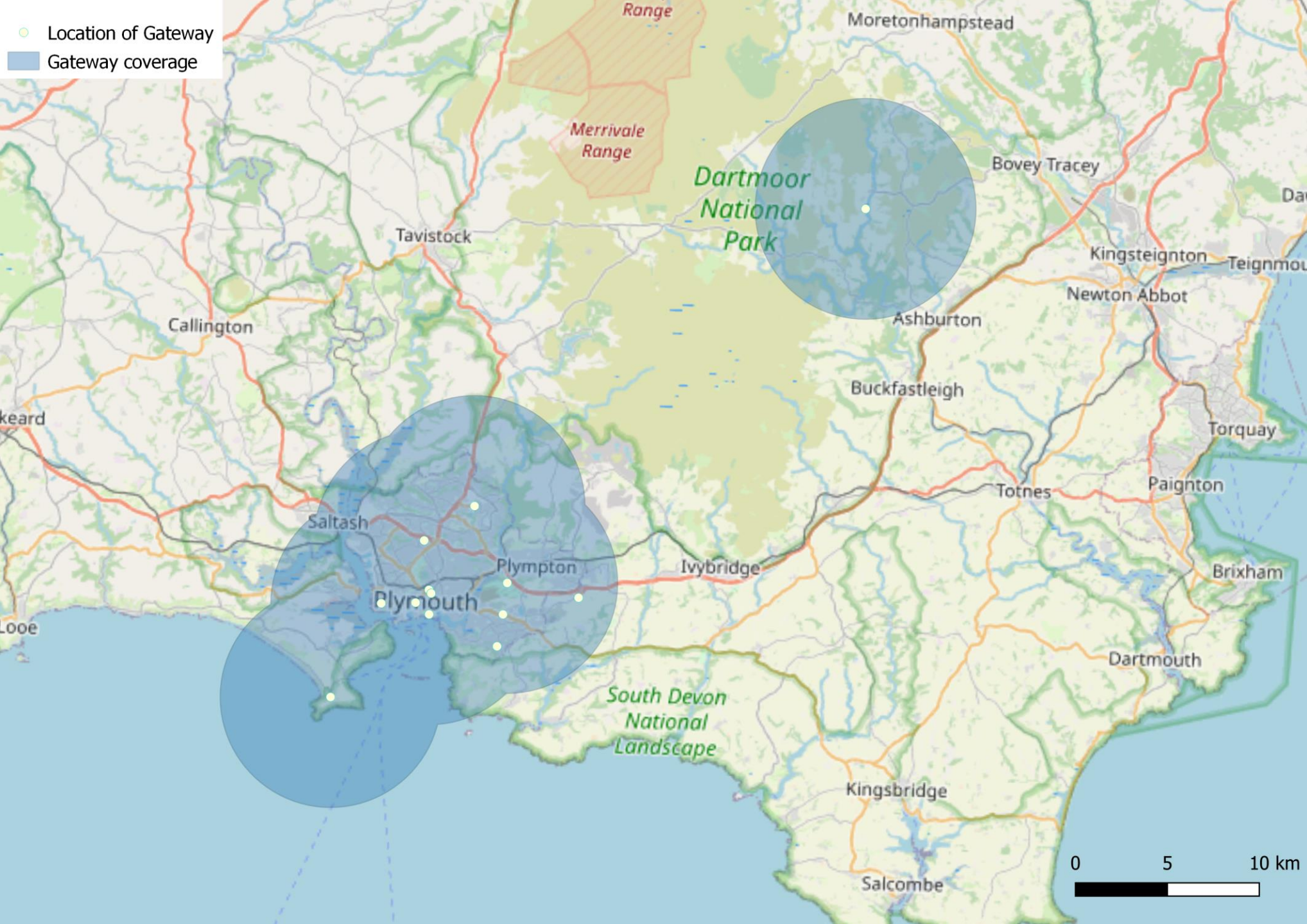
Fig 1. Sources of ambient air pollution at healthcare sites





Study aim

- Assess the spatial variation in pollutant levels at the hospital
- Understand how weather patterns influence pollutant levels

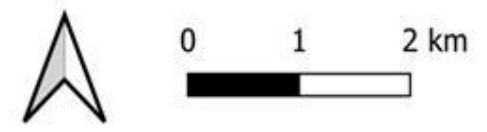


Sensors
location
website:
<https://arcg.is/fvHW>

Study area



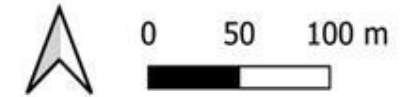
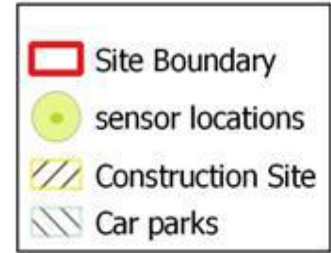
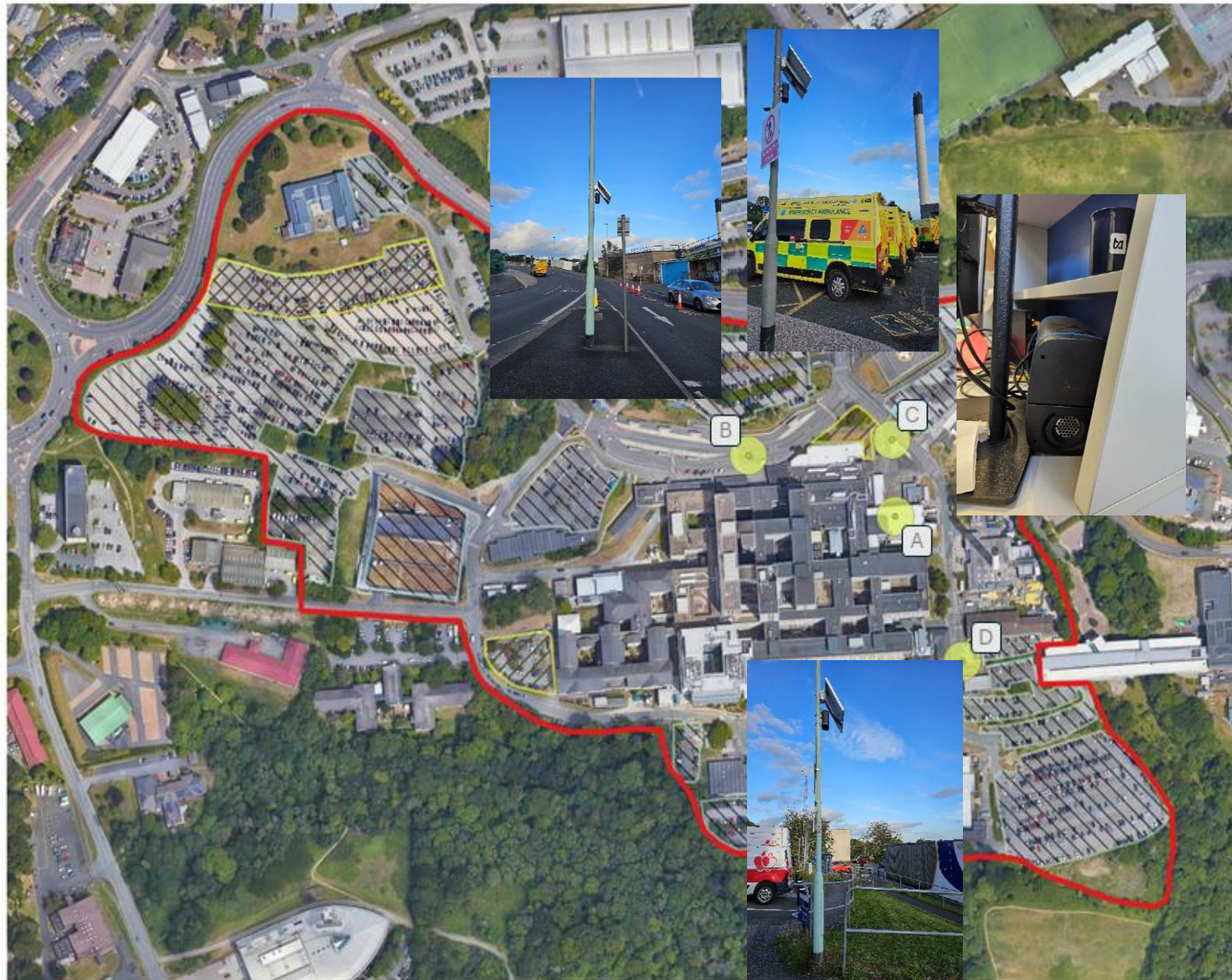
- Site Boundary
- Plymouth Airport
- Sewage Works
- Millbay Docks
- Cattedown Industrial Estate
- Devonport Industrial Area
- A 38
- A 386



Prevaling winds (SW)



Site plan

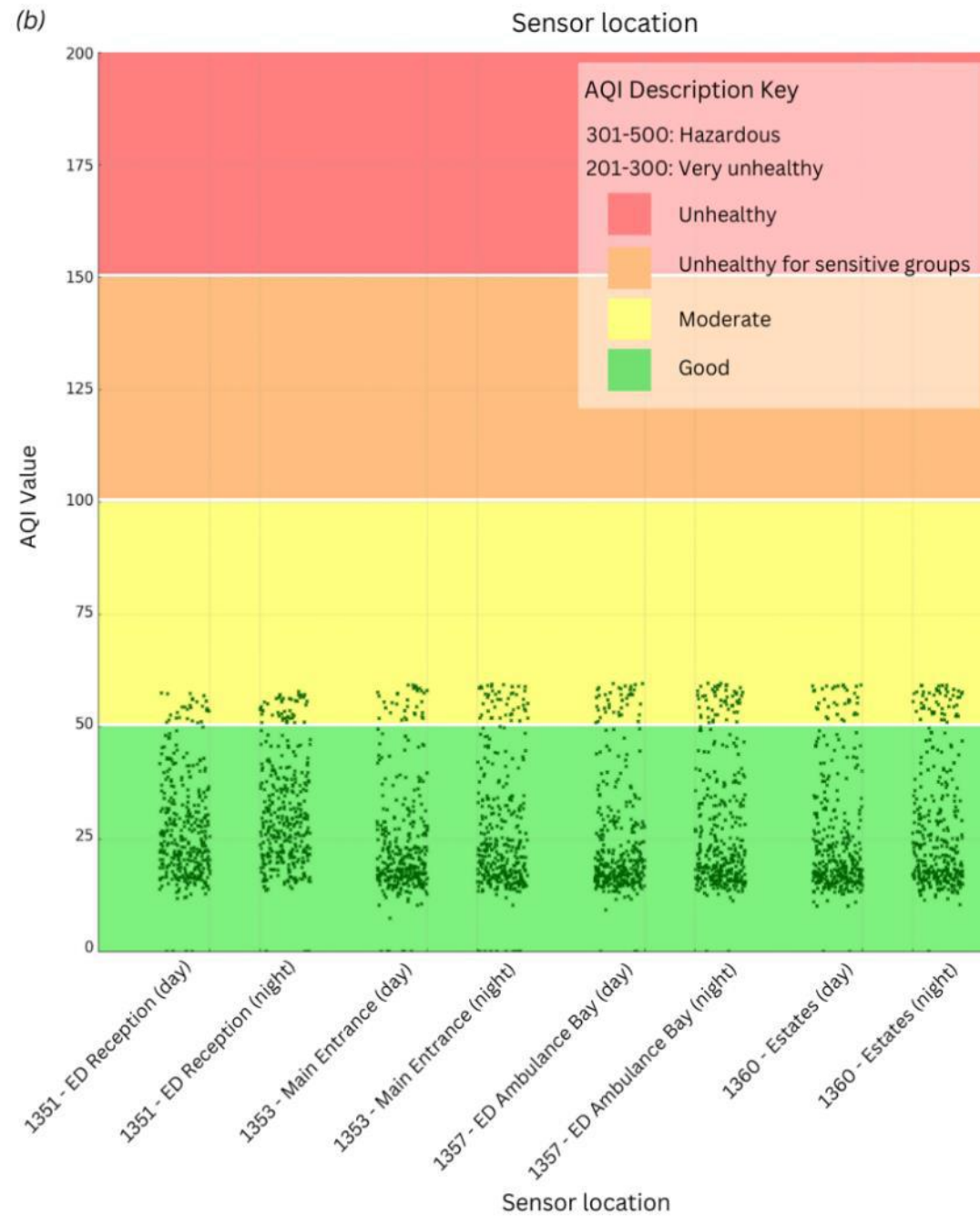


CODE	LOCATION
A	1351 – ED Reception
B	1353 – Main Entrance
C	1357 – ED Ambulance Bay
D	1360 - Estates



Study period: 1 June 2023 – 31 May 2024

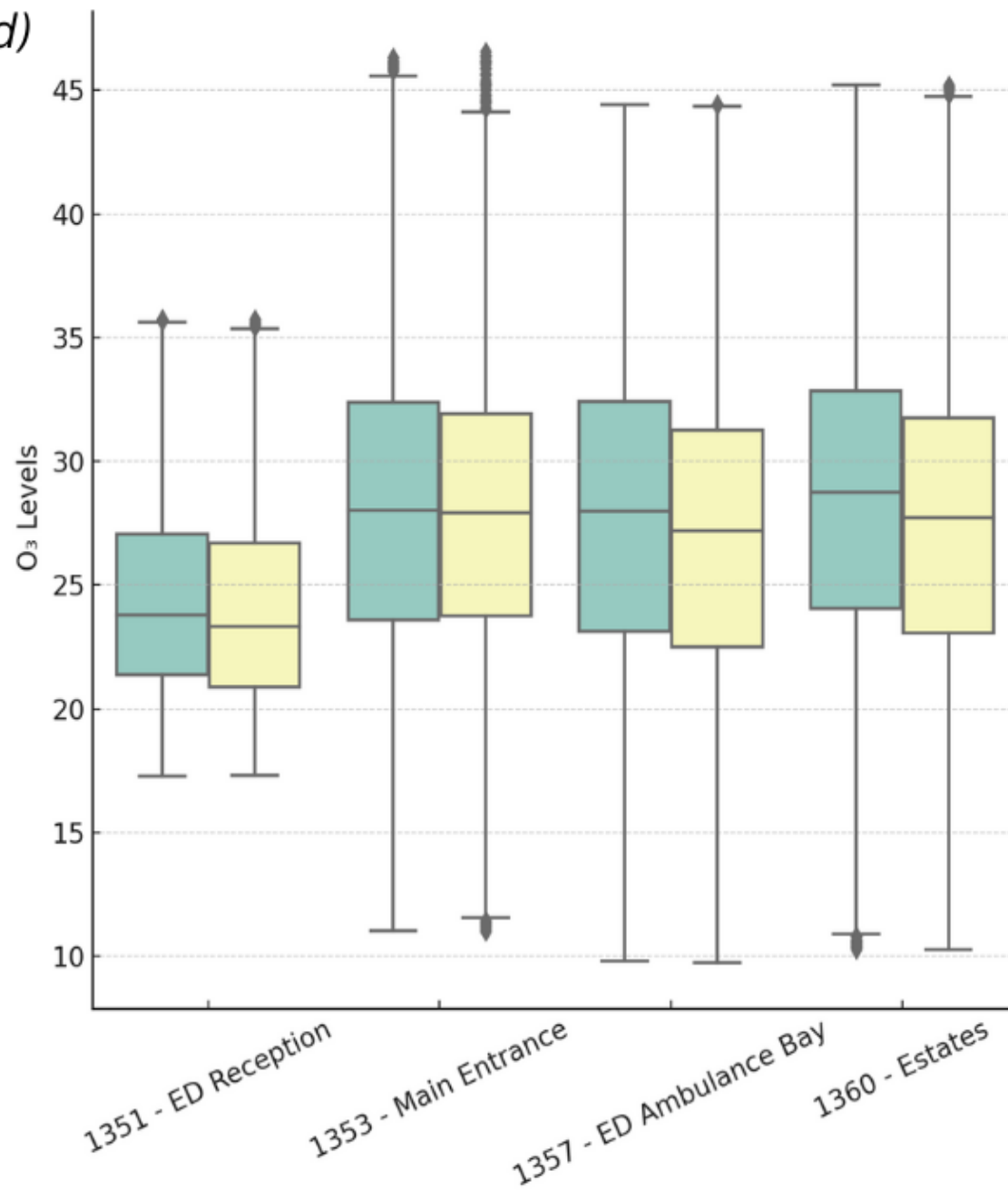
AQI results by location and diurnal period



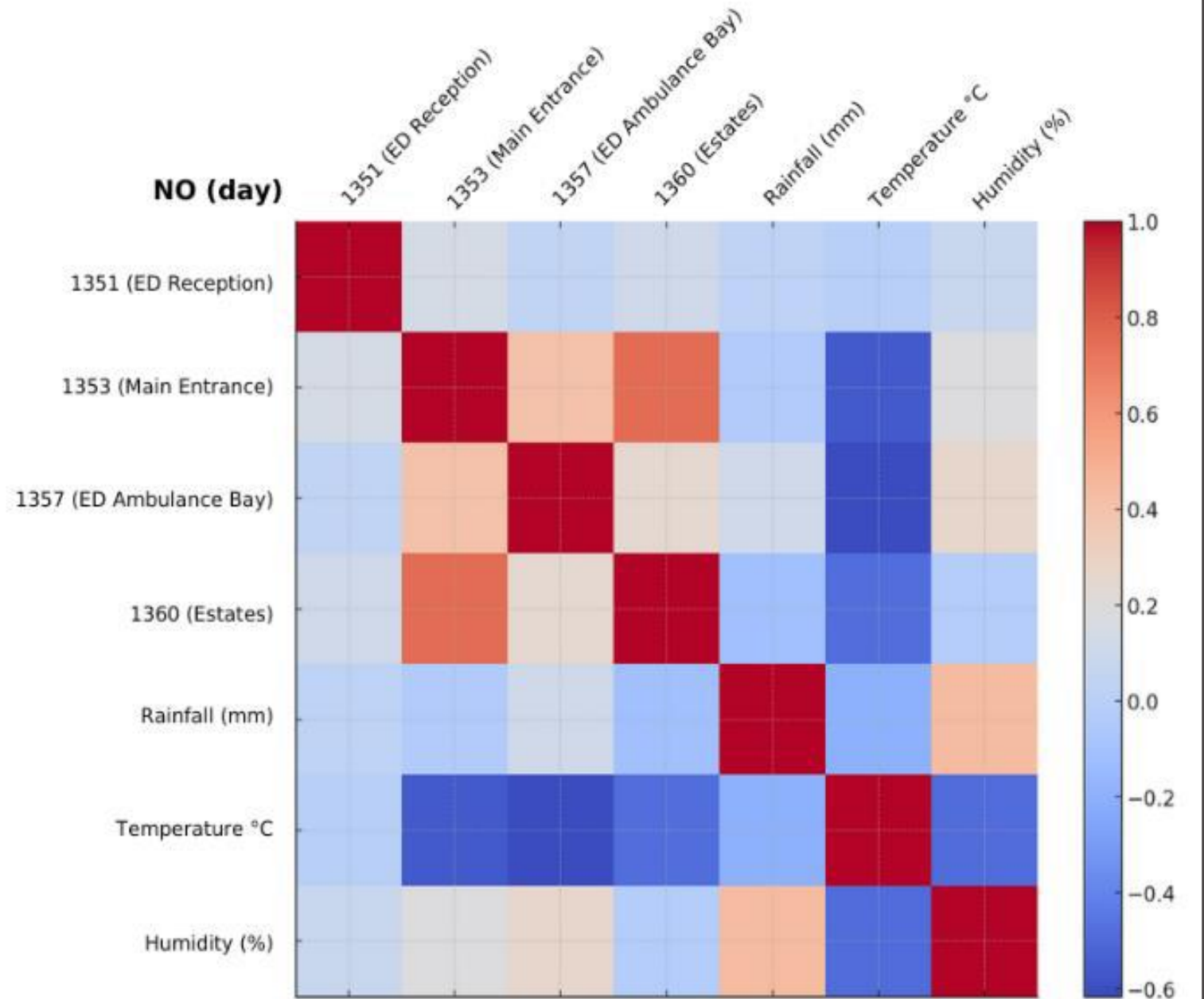
O₃ level (day vs night)

Time of Day
Day
Night

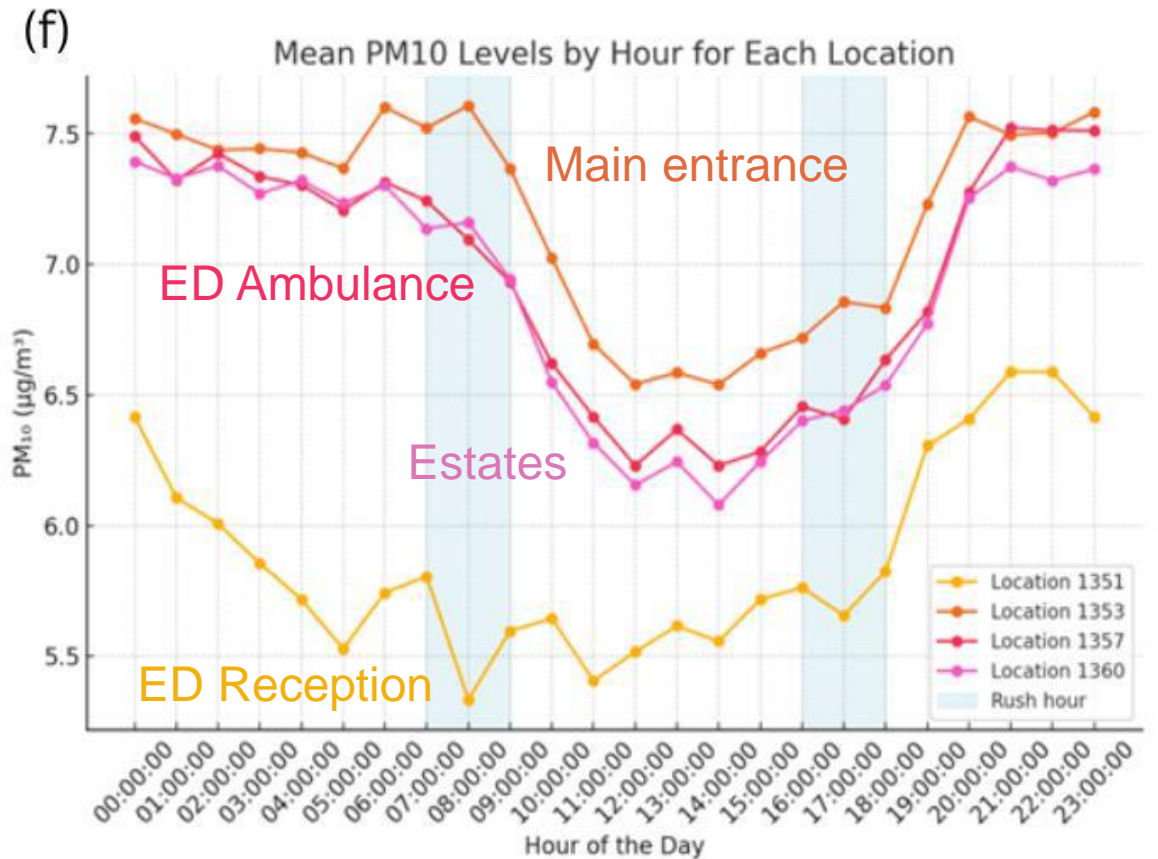
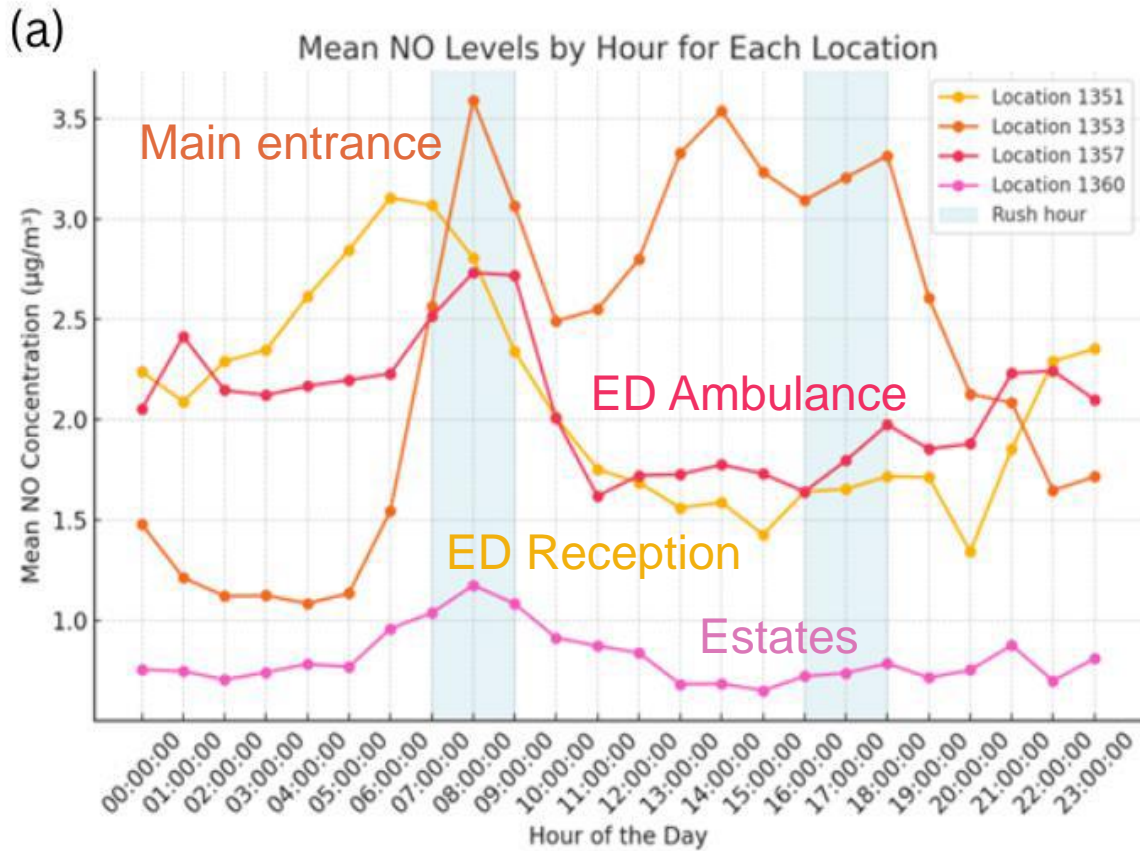
(d)



Correlation between NO and weather variables



Influence of rush hours on air quality at the hospital



WHO Air Quality Guidelines (2021 AQGs)
PM₁₀ – 45 $\mu\text{g}/\text{m}^3$ (24-hour mean)

Practical implications

Ventilation and Filtration Systems

Traffic Management and Hospital Layout

Greener transportation options and sustainable building design

